



BodyCool™
Cooling
T-SHIRT

BodyCool™ Cooling T-SHIRT

The MRCOOL® BodyCool™ T-SHIRT is a wearable body cooling system that effectively provides relief for people working or training in high temperatures by circulating cold water in clothing.



This innovative mobile cooling technology relies on a sophisticated network of water circulation conduits embedded in the liquid-cooled fabric.

The MRCOOL® backpack holds a special water bladder similar to those found in hydration backpacks. What makes this water bladder special? When connected and powered by the included 5V lithium battery, the cold water stored in the bladder circulates through the shirt piping and cools the wearer for hours.

Features



Fast cooling effect



Ergonomically designed and comfortable to wear



Uniform cooling distribution during operation



Controllable temperature



Simple operation



Safe and reliable

APPLICATIONS

- ▶ Commercial - Industrial Workers, Delivery Drivers, Warehouse Workers, Construction Crews, Farmers, and more.
- ▶ Athletic - Athletic Training, Sports Medicine, Motor Sports, Sports Fans, and more.
- ▶ Recreational - Hiking, Gardening, Travel, Biking, Fishing, and more.



Working Temperature

95-122°F

Working Time

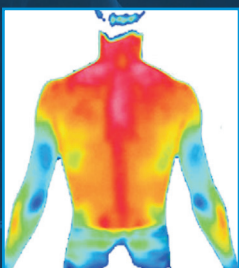
2-3 HOURS

Our water cooling technology has been proven three times more effective at reducing the human body's core temperature compared to other cooling methods. The liquid-cooling t-shirt, backpack, water bladder, and battery make up the body cooling system. The ergonomics, flow channel control, and heat exchange efficiency creates a cooling effect that is very beneficial under extreme temperatures.

This lightweight t-shirt can be worn under clothing or uniforms and can be used for numerous applications such as athletic training, motorsports, hiking, industrial work, and more.



Comparison before and after use



Before Wearing

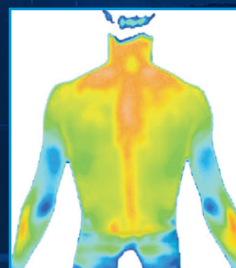
The hot, scorching sun limits productivity.

The effects of heat negatively impact the physiological functions of the human body.

Severe heat exhaustion can lead to heat stroke, a life-threatening condition.



Drop 10° F



After Wearing

The user's thermal temperature has dropped by 10°.

Productivity levels return to normal.

Protects the user against negative physical conditions that extreme heat can cause.



48 Remington Way
Hickory, KY 42051

Phone: 270-366-0457
www.mrcool.com

*Display Images for demonstrative purposes only. Actual images during product use may vary.

NOTICE: This brochure may be updated at any time without expressed or written consent. It is for informational purposes only.